



Prime Minister Challenge Fund

- The Fund will support practices to test new ways of delivering GP services and making services more accessible to patients.
- NHS England received over 250 expressions of interest from groups of practices throughout England.
- £50million for 12months starting from April 2014. 18 Brighton Practices received £2,055million.



What Is Our Purpose?

For people using services:

- To bring better access, better experience, more choice, better information, safer care, and to put people in control

For general practice:

- To work towards a more sustainable model of general practice



How?

- By **building** the skill mix within practices and their community partners to deliver collaborative same day access
- By **connecting** to pharmacy and voluntary sector partners
- By **delivering** extended access in terms of location, hours, and modality



What Outcomes Will People Experience?

- **People have more choice** about their care and treatment
 - “My care is tailored to me as an individual”
 - “I can access services when I need them”
 - “The services I use help me and make a difference”
 - “The services I use keep me safe and do me no harm”
- **People are empowered** to be in control of their care - improvements to how people self care and self manage
 - “I share my records with a wide range of people including pharmacists, nursing staff, extended scope receptionists, and voluntary sector partners.”
- **Everyone in our community can access services** – using data to target support people in more vulnerable circumstances will be proactively identified and assessed



What Outcome Will Our Practice Achieve:

- **Up skilled workforce** and sustainable training programmes
- **Access and knowledge** to Community resources
- **Sustainability** - Change in skill mix, reduction of A&E and non elective care admissions
- **Ability to increase list size** without increasing GP numbers
- **Time to think** – Better clinical decisions through an improved working life



5 Service Redesign Areas

*What are the capabilities of each of these roles and resource requirements?
How can we learn and gather data?*

GP triage
Responsible for designing front end GP triage.
Looking at efficiency, redirection and accountability.

What training needs to take place?

Pharmacy
Responsible for designing how pharmacy is connected to practices, including IM&T issues, information governance and pathways

5 Service Redesign workstreams

Extended hours and skill mix
Looking at how nurse practitioners could carry out work previously done by GPs. Clinical workflows.

What assurance systems need to be in place to ensure people using services feel safe?

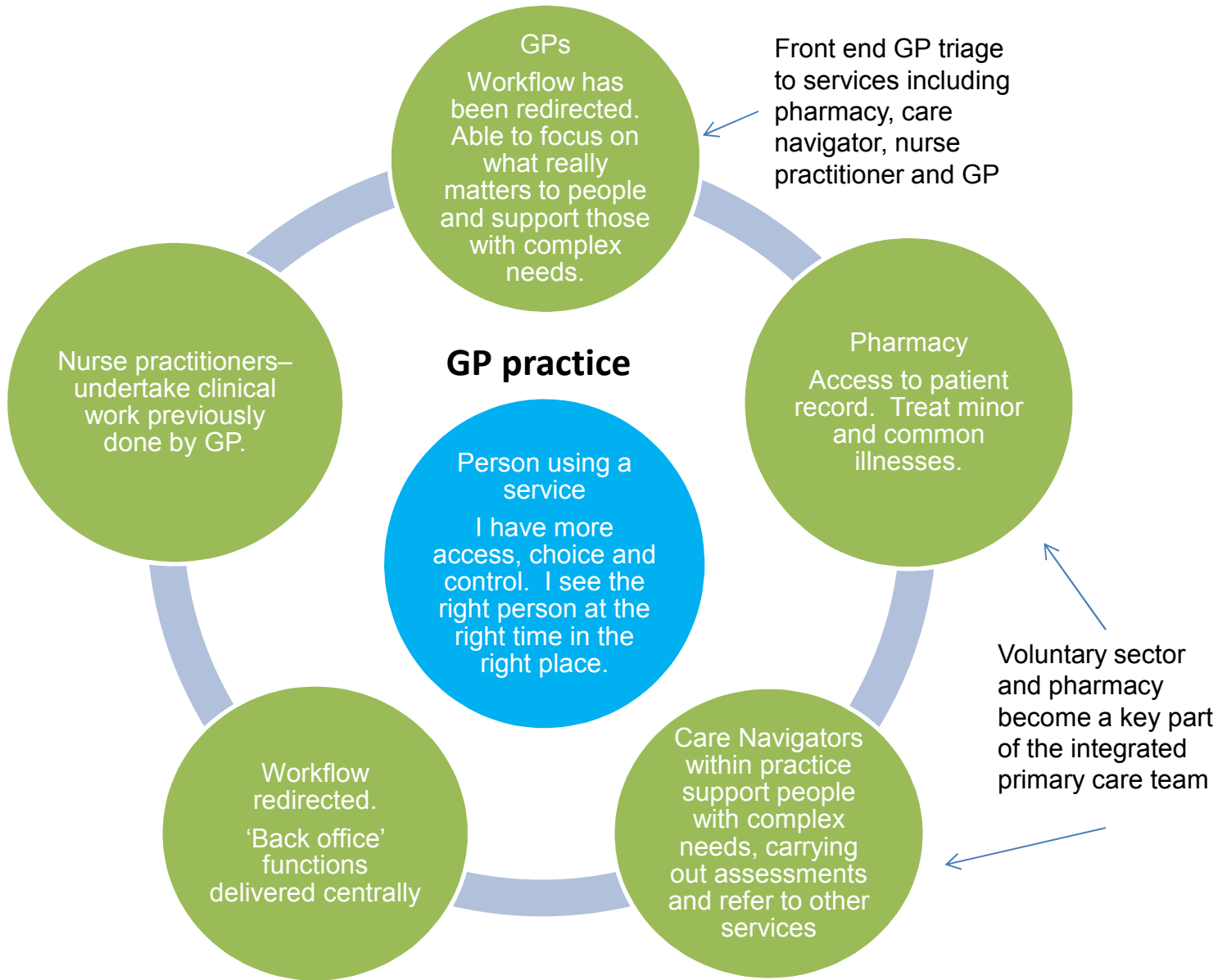
Workflow redirected.
Responsible for seeing how 'Back office' functions could be delivered centrally

How can we best manage the change?

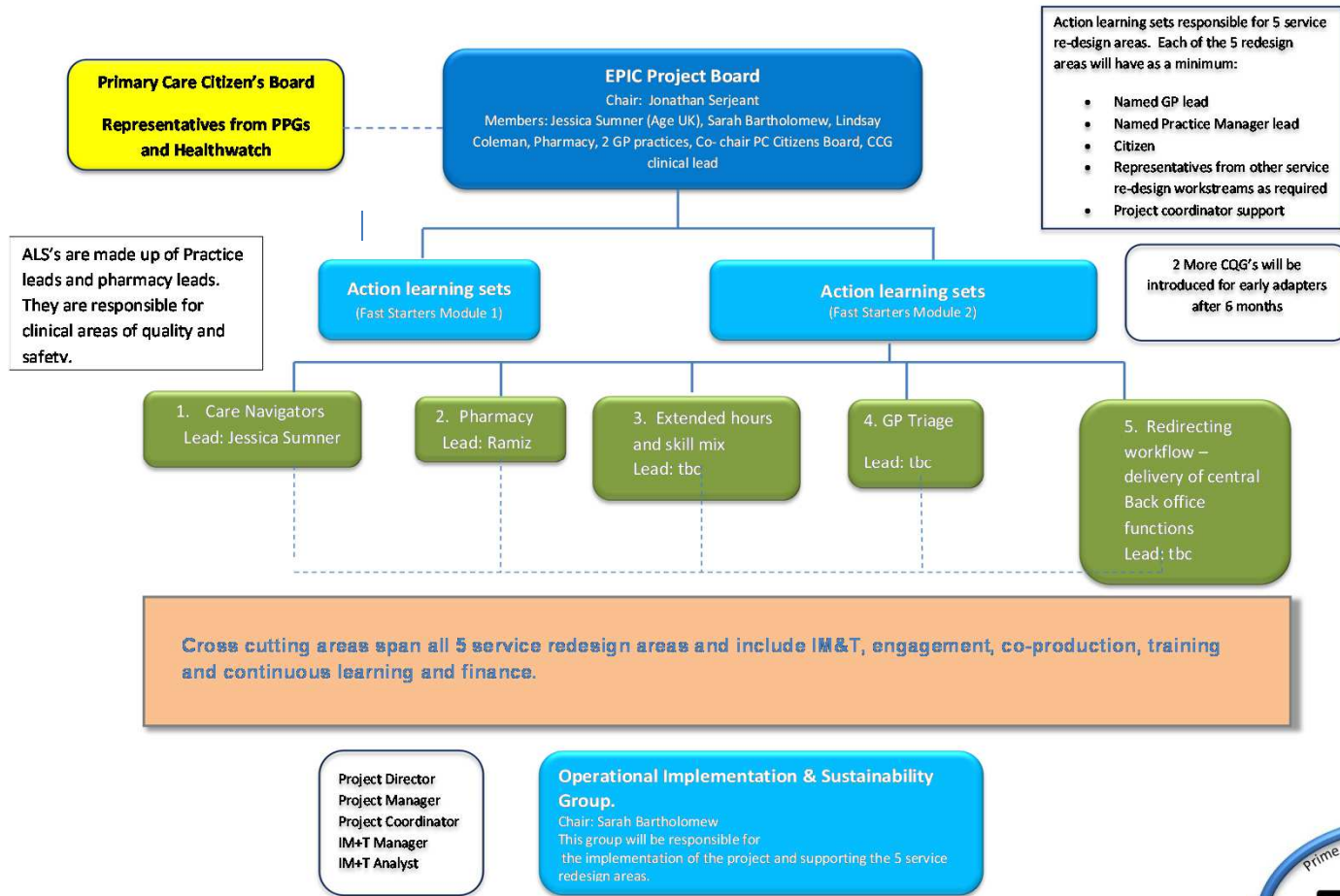
Care Navigators
Responsible for recruiting, training and supporting volunteers.
Training in practices.



The Practice



Supporting Structure



Faster Starter GP Group By Sept 14

Stage 1: Fast-Start (Total Pop. 49,178)				
Primary Care Module 1 (Pop. 14,640)				
Location	Practices	Practice population	Pharmacies	Care Navigators
West Hove	Mile Oak Medical Centre	7,500	Co-op, Mile Oak Boots, Hangleton Rd Sainsbury, West Hove	7
Portslade	Benfield Valley Healthcare hub (Portslade County Clinic site)	3,300		
West Hove	Benfield Valley Healthcare hub (Burwash Medical Centre)	1,840		
Hangleton Manor,	The Practice PLC	2,000		
Primary Care Module 2 (Pop. 34,538)				
Central Hove	Brighton Health and Wellbeing Centre	7,300	Gunns, Western Road Paydens, St James St Kamsons, St James St Kamsons, Preston Road	15
Central Brighton	Ardingly Court Surgery	6,138		
Preston Rd	Stanford Medical Centre	15,500		
Central Brighton	Brighton Station (Care UK)	5,600		



Early Adopters

Stage 2: Early Adopters (Total Pop.88,373)				
Primary Care Module 3 (Pop. 44,570)				
Location	Practices	Practice population	Pharmacies	Care Navigators
Central Hove	Charter Medical Centre	17,500	My Pharmacy, Portland Rd P+G, Hove	21
Central Hove	Sackville Road Surgery	11,720	CG, Church Rd, Blakes, Blatchington Ackers, Davigdor Rd	
West Hove	Wish Park Surgery	6,500	Boots, George St & Church Rd	
Hove	Hove Medical Centre	8850	Kamsons	
Primary Care Module 4 (Pop. 43,803)				
North St.	Boots, The Practice PLC	2,000	Kamsons, Whitehawk	20
Central Brighton	St Peters Medical Centre	11,000		
Central Brighton	Beaconsfield Medical Centre	10,003	Lloyds, Wellsbourne	
Falmer	University of Sussex Health Service	16,300		
Central	The Practice PLC, Morley Street	1,000	University Pharmacy	
Whitehawk	The Practice PLC	3,500		

